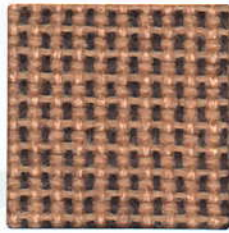


CAGLI ✓ COLOURS COLLECTION



C 03



C 04



C 06



C 07



C 11



C 13



C 14



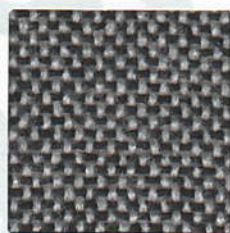
C 22



C 29



C 31



C 73

TECHNICAL DETAILS

CAGLI

Composition:	100% POLYPROPYLENE	
Width:	120 cm/140 cm/150 cm	
Weight:	GR/M ² 320	UNI 5114/82
Light fastness:	5	UNI 7639/89 (blu scale 1-8, max.8)
Fastness to rubbing:		UNI 5153/87
	-dry 4	(grey scale 1-5, max5)
	-wet 4	(grey scale 1-5, max5)
Abrasion resistance:	> 30000 cycles	BS 5690/91

GENERAL CARE AND MAINTENANCE

Best maintenance is essential to keep upholstered furniture looking at its best. Clean up spills promptly with blotting-paper or using a soft brush. Intervene subsequently with caution using solvents or solution until the stain is completely neutralized. Do not use pure cleaning products on stains. Please find herebelow a list of a potential staining products and the advised cleaning products.

COFFE-TEA: water and soap + water and ammonia

GREASE: perchloretylene - trichlorethylene - ethyl ether

LIQUEREUS: water and soap - ethyl ether

MILK: water and soap - ethyl alcohol

DRINKS AND WINE: water and soap

CHOCOLATE: water and soap + water and ammonia

COSMETICS: water and soap - perchloretylene - acetone

INK: ethyl alcohol + trichlorethylene

VARNISH AND COLOURS: spirits of turpentine

SHOE POLISH: perchloretylene - trichlorethylene - ethyl



DORA

COLOURS COLLECTION



D2



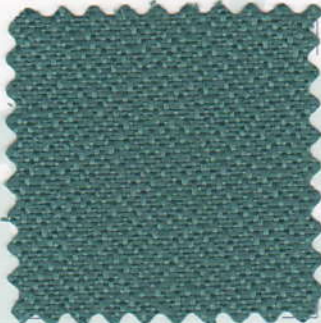
D3



D4



D5



D6



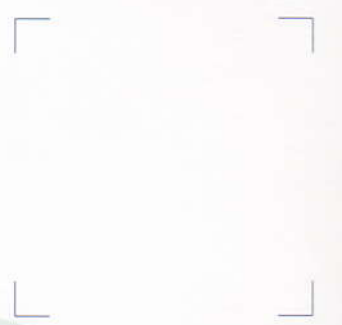
~~D7~~



D8



Ino 2013
D9



D10

TECHNICAL DETAILS

Composition: 100% Polyester

Flammability test required. This fabric manufactured to meet the following codes: California Technical bulletin 117 section E CS191-53

Abrasion resistance: 30000 cycles

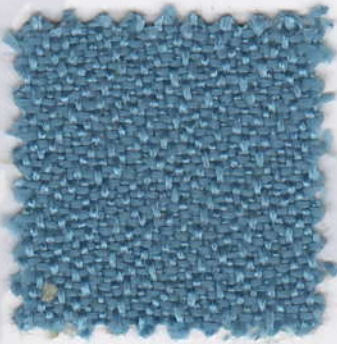
Special processing: GB/8410-94 GB/17591-1998
BS 7176
BS 5852 Part1 Source 0 (Cigarette)
BS 5852 Part1 Source 1 (Butan Flame)
CNS 10285, L 3196A-1

BALI & LLUVIA

COLOURS COLLECTION



B 3



B 13



B 52



B 300



B 303



B 305



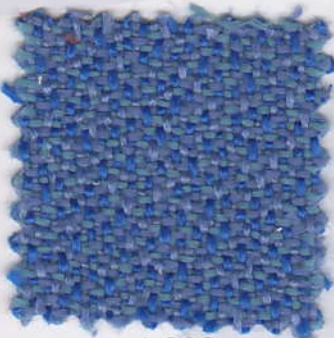
~~B 420~~



B 600



B 840



L 200



L 240



L 520



L 680



TECHNICAL DETAILS

BALI & LLUVIA

Composition:	100% POLYPROPYLENE
Width:	140CM
Weight:	404gr/ml \pm 5%
Warp Density:	10,5 double edged x cm
Weft Density:	10,2 passages x cm
Light fastness:	5/6 UNE - 40187
Rubbing fastness:	DRY 4/5 UNE - EN ISO 105-X 12 WET 4/5 UNE - EN ISO 105-X 12
Abrasion resistance:	BS 5690
Dry washing:	4/5 UNE - EN ISO 105- D01
Martindale:	> 40000 cycles
Cleaning:	use the Hoover
Washed:	carpet shampoo

Stain Resistance: this fabric is designed to resist stain and soiling

Allergical Fenomens: The chemical composition does not produce allergic reactions

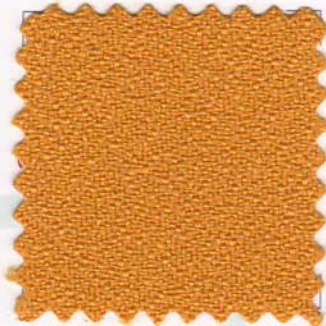
BONDAI

COLOURS COLLECTION

NOVA LÁTKA -
✓ 100.000 etén. oytka
oe



BN 1



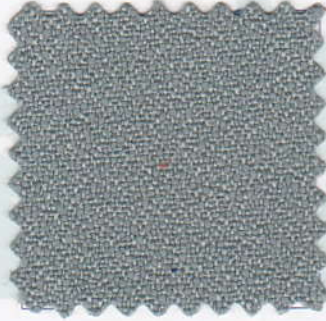
BN 2



BN 3



BN 4



BN 5



BN 6



BN 7

TECHNICAL DETAILS

Composition: 100% Polyester

Flammability: EN 1021. 1 (cigarette test); EN 1021.2 (match test)

Abrasion resistance: UNI EN ISO 12947/2; 100.000 rubs

Weight: 350 ± 5% g/m

Width: 140 ± 2% cm

Piling: (Piling box 20.000 rubs) UNI EN ISO 12945/2;
5 (standard picture); Tolerance: from 4 to 5

Light fastness: (Xenontest) UNI EN ISO 105-B02;
6 (blue scale); Tolerance: from 4 to 5

MIKO

COLOURS COLLECTION



MK 100



MK 200



MK 302



MK 400



MK 405



MK 421



MK 501



MK 603



MK 800



MK 401

Miko Levy
TECHNICAL DETAILS

Composition:

Substrate 50% PU, 32% PES, 17.5% CO

Surface 100% PU

Abrasion resistance: 100.000 cycles

Weight: 450 gr/m²

Color fastness to artificial light: 4/5

 **ANTARES**
INTERNATIONAL

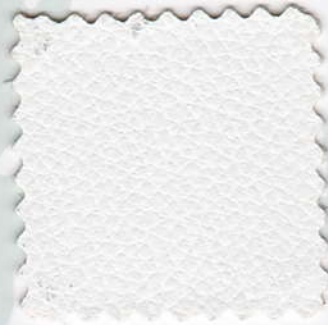


SKAI

COLOURS COLLECTION



SK 1



SK 2



SK 3



SK 4



SK 5



SK 6



SK 7



SK 8



SK 10



SK 11



SK 12



SK 13

TECHNICAL DETAILS

Composition:

Substrate 15% PE,

Surface 48% PVC - 37% Plastification

Weight: 450 gr/m²



REGINE

✓
COLOURS COLLECTION



RG4



~~RG7~~



~~RG9~~



RG12



RG13



RG14



RG19



RG27



~~RG28~~



RG32



TECHNICAL DETAILS

REGINE

WATER REPELLENT – AZO FREE COLOURS – ORGANIC FREE FORMALDEIDE

Composition:	100% pl Microfibre Backing 50% co 50% pl	
Width:	140 cm	
Weight:	400 Gr.	UNI 5114/82
Light fastness:	4/5	UNI EN ISO 105-B 02:01
Color fastness to crocking:		UNI EN 105 X12:97
	-dry 4-5	(grey scale 1-5, max5)
	-wet 4	(grey scale 1-5, max5)
Pilling resistance:	no pilling	ISO 12945 2:00
Martindale:	60000 cycles	UNI EN ISO 12947:00

GENERAL CARE AND MAINTENANCE

For the removal of stains please follow our „Removal of Stains“ table. Whatever the stain may be, you have to:

DRINKS, ALCOHOL, SPIRITS, WINE: remove as much as possible with blotting paper, shampoo with mild soapy water, then clean with diluted methylated spirit (10%).

COFFÉE, TEA, MILK: remove as much as possible with blotting paper, then shampoo with mild soapy water.

CHOCOLATE, SWEETS: sponge with warm water (max. 40°C).

PAINT: oil colours - clean with turpentine, then shampoo with soapy water. Distemper: shampoo with cold soapy water, if the stain is old ask an expert.

GRASS, VEGETABLES: Remove as much as possible with blotting paper, clean with 20% methylated spirit and shampoo with soapy water.

JAM, SYRUP, FRUIT JUICE: Remove most of the dirt with a spoon the shampoo with warm water (max 40°C)

UPSTICK, SHOE - POLISH, OIL, GREASE: Melt with ethyl alcohol, then tampon with a blotter imbued with a neuter cleaner and rinse well.



MICROFIBRES

COLOURS COLLECTION



MF01



MF02



MF03



MF06



MF04



MF05



MF10



MF08



MF07



MF09



MICROFIBRES

COLOURS COLLECTION

GENERAL CARE AND MAINTENANCE

This elegant upholstery fabric is designed to fulfil the highest expectations. The broad colour scheme addresses every individual taste and the neutral character of the microfibre lets it fit into every interior.

The velvet surface is constructed with 100% polyamide, its substrate with polyester and cotton. This unique combination guarantees a high resistance to abrasion.

These microfibre breathes actively: the high air permeability allows the velvet to adjust to temperature and humidity, ensuring unmatched comfort.

This microfibre is designed to resist stains and soiling. Most spills will bead up on the surface for easy cleaning. Heavily soiled areas may be cleaned with most commercially available cleaners.

Use water-based cleaners only. Apply the cleaner to the soiled area sparingly, wait two to three minutes and gently rub in a circular motion until the stain is removed. Let dry naturally, do not use a hair dryer. When dry, erect the pile with a soft brush. As with all fine velvets, this fabric is susceptible to shading and marking which enhances the natural beauty of the fabric. Remove light creases by light steaming.

This microfibre has been thoroughly tested according to international standards. It is free of PCP's and is produced without CFC's.

It has received a "clean bill of health", making it safe for its users and its environment.

This product is strong and at the same time ultra-soft, skinfriendly and easy to clean.

Composition SUBSTRATE: Polyester/Cotton 65/35%
SURFACE: Polyamide 100%
Width 140 cm
Weight 280 gr/m²
Tear strength (BS 4303) • WARP: + 25 N • WEFT: + 25 N
Tensile strength (ISO5081) • WARP: + 500 N • WEFT: + 500 N
Elongation (ISO5081) • WARP: 14% • WEFT: 18%

Fabric resistance to abrasion
(BS 2543) • 80000 cycles (no visual wear)
Pilling test 4 - 5
Fastness to artificial light (ISO 105 B02) > 4
Rubbing fastness (ISO 105 x 12) • DRY: 4 - 5 • WET: 4
Fire proofing (BS EN 1021/1&2)
NO=1935 • YES=2935

Washing instructions



Wash separately from other fabrics.

Dry flat away from radiators or fires.



Machine wash in lukewarm water at a gentle setting, reduced agitation. Cold rinse, short spin, do not wring.



Hand wash in lukewarm water. Cold rinse, do not wring.



Tumble dry at low temperature.



Do not dry clean.



Do not iron.



Do not bleach.

K O R T E X I N

COLOURS COLLECTION



NK 01



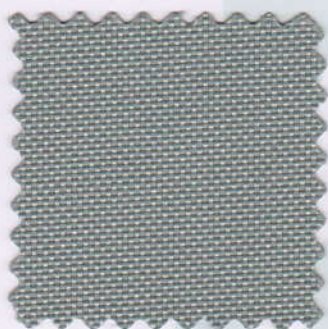
NK 02



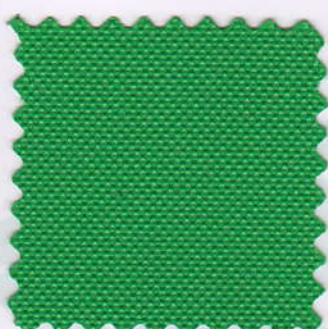
NK 03



NK 06



NK 07



NK 08



NK 19



NK 20



NK 59



NK 63



NK 64

TECHNICAL DETAILS

Composition: 100% PES (W/R)

Abrasion resistance: 50.000 rubs

Weight: 420 gr/m²



TD 474/DNY



Phoenix



Sandstorm YP107



Apple YP108



Parasol YP109



Bluebell YP097



Solano YP110



Nougat YP111



Campeche YP112



Scuba YP082



Bluefield YP021



Olympic YP113



Blizzard YP081



Windjammer YP047



Curacao YP005



Cayman YP024



Lobster YP076



Paseo YP019



Rainforest YP114



Ocean YP100



Tarot YP084



Jamaica YP027



Sombrero YP046



Montserrat YP011



Costa YP026



Guyana YP051



Calypso YP106



Havana YP009



Taboo YP045



Arawak YP016



Tobago YP030



Belize YP105

www.camirafabrics.com/samples

To order samples, visit our on-line sample service.



Phoenix



UK

Composition	100% Polyester. Non metallic dyestuffs
Weight	270g/m ² ±5% (380g/lin.m. ±5%)
Width	140cm ±2% Usable
*Abrasion Resistance	100,000 Martindale cycles with a 5 year guarantee of wearability (full details available)
Flammability	BS EN 1021 - 1 :2006 (cigarette), BS EN 1021 - 2:2006 (match), BS 7176 :2007 Low Hazard. <i>Note: Flammability performance is dependent on foam used.</i>
*Light Fastness	6 (ISO 105 - B02:1999)
*Fastness to Rubbing	Wet: 4 Dry: 4 (ISO 105 - X12:2002)
Maintenance	Washable to 60°C. Vacuum regularly. Wipe clean with a damp cloth or shampoo using proprietary upholstery shampoo.
Colour Matching	Batch to batch variations in shade may occur within commercial tolerances.

*Tested in accordance with BS 2543:1995/2004. Further information available on request. Please note that ultimate seam performance is dependent on seam construction, and needle and thread type. We recommend that appropriate sewing advice be taken.
Note: We reserve the right to alter technical specifications without notice.

F

Composition	100% Polyester. Teintures non métalliques
Poids	270g/m ² ±5% (380g/m.l. ±5%)
Largeur	140cm ±2% utilisable
*Résistance à l'abrasion	100,000 Martindale tours avec une garantie de durabilité de 5 ans (renseignements complémentaires disponibles)
Flammabilité	BS EN 1021 - 1 :2006 (cigarette), BS EN 1021 - 2:2006 (allumette) BS 7176 :2007 Low Hazard <i>Note: Réaction au feu dépend de la mousse utilisée.</i>
*Solidité à la lumière	6 (ISO 105 - B02:1999)
*Solidité au Frottement	Mouillé: 4 Sec: 4 (ISO 105 - X12:2002)
Nettoyage	Lavable jusqu'à 60°C. Aspirer régulièrement. Essuyer avec une étoffe humide ou nettoyer à l'aide d'un produit approprié pour tissus d'ameublement.
Standardisation des coloris	Variations de coloris d'un bain à un autre peuvent se manifester.

*Testé selon la norme BS 2543:1995/2004. De plus amples informations sont disponibles sur demande. Veuillez noter que le glissement de la couture sous tension dépend de la structure de la couture, de l'aiguille et du fil. Nous recommandons de prendre conseil au près d'un professionnel.
Veuillez noter que nous réservons le droit de modifier les spécifications techniques sans préavis.

I

Composizione	100% Poliestere. Tinture prive di metalli pesanti
Peso	270g/m ² ±5% (380g/lin.m. ±5%)
Altezza	140cm ±2% Utilizzabile
*Resistenza all'abrasione	100,000 Cicli Martindale con garanzia d'uso di 5 anni (dettagli disponibili a richiesta)
Resistenza al fuoco	BS EN 1021 - 1 :2006 (Sigaretta), BS EN 1021 - 2:2006 (Cerino) BS 7176 :2007 Low Hazard <i>Note: Il grado di resistenza al fuoco dipende dal tipo di schiuma utilizzata</i>
*Solidità alla luce	6 (ISO 105 - B02:1999)
*Resistenza allo sfregamento	Umido: 4 Secco: 4 (ISO 105 - X12:2002)
Manutenzione	Lavabile a 60°C. Regolarmente con aspirapolvere. Strofinare leggermente con panno umido o usare detergente neutro per tessuti
Costanza del colore	Sono possibili leggere variazioni.

*Ha superato il test BS 2543:1995/2004. Ulteriori informazioni disponibili su richiesta. La resistenza della cucitura dipende dal tipo di cucitura e dall'ago e dal filo usati. Si suggerisce di seguire istruzioni di un tecnico.
Nota: Ci riserviamo il diritto di modificare le specifiche tecniche senza preavviso.

D

Zusammensetzung	100% Polyester. Nicht schwermetallhaltige Farbstoffe
Gewicht	270g/m ² ±5% (380g/lin.M. ±5%)
Breite	140cm ±2% ohne Webkante
*Scheuerfestigkeit	100,000 Martindale Scheuertouren und 5 Jahre Garantie gegen Durchscheuern (Details auf Anfrage)
Feuersicherung	EN 1021 - 1:2006 (Zigarettestest), EN 1021 - 2:2006 (Streichholztest), BS 7176 :2007 Low Hazard <i>Bemerkung: Schwerentflammbarkeit hängt von verwendetem Schaum ab.</i>
*Lichtechtheit	6 (ISO 105 - B02:1999)
*Reibechtheit	Nass: 4 Trocken: 4 (ISO 105 - X12:2002)
Reinigung	Waschbar bis 60°C. Regelmässig staubsaugen. Mit einem feuchten Tuch abwischen, oder mit einem speziellen Polsterschaum behandeln.
Farbabweichungen	Handelsübliche Farbabweichungen vorbehalten

* Wurde nach BS 2543: 2004 getestet. Weitere Informationen erhalten Sie auf Nachfrage. Eine optimale Nahtauesfestigkeit hängt von der Nahtnahe, der verwendeten Nadel und des Fadens ab. Wir empfehlen daher Nähtversuche durchzuführen.
Anmerkung: Wir behalten uns die Änderungen technischer Spezifikationen vor.

DK

Materiale	100% Polyester. Ikke metalliske farvestoffer
Vægt	270g/m ² ±5% (380g/lin.m. ±5%)
Bredde	140cm ±2% anvendeligt
*Slidstyrke	100,000 Martindale slidebevægelser med 5 års garanti (udfortlig beskrivelse af garantien kan rekvireres)
Flammesikring	BS EN 1021 - 1:2006 (cigarettest), BS EN 1021 - 2:2006 (tændstiktest) BS 7176 :2007 Low Hazard <i>Bemærk: Flammesikkerheden er afhængig af anvendt skumtype</i>
*Lysægted	6 (ISO 105 - B02:1999)
*Gnidægted	Våd: 4 Torr: 4 (ISO 105 - X12:2002)
Rengjøring	Slavsuges regelmæssigt. Alternativt rengøring med en hårdt opvredet klud eller skumrensning ved brug af en anerkendt møbelschampoo.
Farvedifferencer	Farvedifferencer indenfor kommercielle tolerancegrænser kan forekomme fra serie til serie.

* Testet i henhold til BS2543:1995/2004. Yderligere information kan fås på forespørgsel. Vær opmærksom på, at optimal samlingning er afhængig af søm-, nål- og trådtype. Vi anbefaler, at du følger relevante sy-instruktioner.
Bemærk: Vi forbeholder os retten til at ændre tekniske specifikationer uden varsel.

ES

Composición	100% Polyester. Tintes no metálicos
Peso	270g/m ² ±5% (380g/lin.m. ±5%)
Ancho	140cm ±2% utilizable
*Resistencia a la abrasión	100,000 Martindale ciclos con garantía de uso 5 años (más información disponible bajo consulta)
Inflamabilidad	EN 1021 - 1 :2006 (cigarrillo), EN 1021 - 2:2006 (cerilla), BS 7176 :2007 Low Hazard <i>Condiciones ignífugas dependientes del tipo de foam utilizado</i>
*Solidez a la luz	6 (ISO 105 - B02:1999)
*Solidez al rozamiento	Húmedo: 4 Seco: 4 (ISO 105 - X12:2002)
Maintenance	Lavable hasta 60°C. Limpiar con aspiradora frecuentemente. Bien lavar con un paño húmedo o con un champú apropiado para tapicería.
Colour Matching	Cada lote puede tener pequeñas variaciones en el tono dentro de las tolerancias comercialmente aceptadas.

*Pruebas realizadas según la norma BS 2543:1995/2004. Más información disponible bajo consulta. El deslizamiento de costura depende de su construcción así como el tipo de aguja e hilo empleados. Se recomienda que pida consejos apropiados para la costura.
Se reserva el derecho de modificar las especificaciones técnicas sin previo aviso.

camira

Camira Fabrics Ltd, Hopton Mills, Mirfield, West Yorkshire, UK, WF14 8HE

T +44 (0)1924 490591 Sales: UK (01924) 490491, Int. +44 1924 491666 F +44 (0)1924 495605 / 498930 e-mail: info@camirafabrics.com

UK Sales	T 01924 490491	F 01924 498930
International Sales	T +44 1924 491666	F +44 1924 495605
France/Benelux	T +32 56 227 266	F +32 56 228 647
Germany	T +49 7031 60 84 30	F +49 7031 60 84 33
Scandinavia	T +45 32 55 20 01	F +45 32 52 55 45
Hong Kong	T +852 2314 8728	F +852 2314 4250
Dubai	T +971 4 3967398	F +971 4 3967398

www.camirafabrics.com



Mixed Sources
Product group from well-managed forests and other controlled sources
www.fsc.org Cert no. CU-COC-807273-0
© 1996 Forest Stewardship Council



ISO 9001:FM 26548



INVESTOR IN PEOPLE



ISO 14001:FM 35118

Urban ^{plus}



Sidewalk YN094



Metropolis YN097



Suburbia YN159



Uptown YN200



Curb YN206



Penthouse YN202



Square YN207



Ringroad YN208



Conurbation YN082



Junction YN083



Streetsmart YN209



Boulevard YN160



Underground YN145



Nightowl YN210



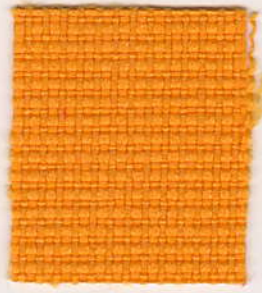
Downtown YN190

5LET ZARUKA
100.000 otěr. cyklů
DHNÍ PÉČI

SKLADEM DO 14dní
DOSTATNĚ CCA 30dní



SKLADEM



Avenue YN148



Highrise YN076



Living YN108



Congestion YN079



Precinct YN027



District YN212



Cosmopolitan YN203



Freeway YN211



Graffiti YN204



Bedsit YN158



Bench YN091



Intersection YN205



Loft YN201



Innercity YN086



Subway YN009

SKLADEM

www.camirafabrics.com/samples

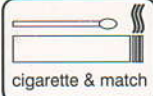
To order samples, visit our on-line sample service.

Urban plus

second nature™
recycled



5
year guarantee



UK

Composition
100% Recycled Polyester
Non metallic dyestuffs

Weight
320g/m² ±5%
(450g/lin.m. ±5%)

Width
140cm ±2% Usable

***Abrasion Resistance**
100,000 Martindale cycles with
a 5 year guarantee of wearability
(full details available)

Flammability
BS EN 1021 - 1:2006 (cigarette)
BS EN 1021 - 2:2006 (match)
BS 7176 : 2007 Low Hazard
BS 5852 : 2006 Section 4
Ignition Source 5
BS 7176 : 2007 Medium Hazard

Pending external certification:
CSE RF 1/75/ACSE RF 3/77 - Class 1
NF - P - 92 - 507 M1
DIN 4102 B1

Note: Flammability
performance is dependent on
foam used.

***Light Fastness**
6 (ISO 105 - B02:1999)

***Fastness to Rubbing**
Wet: 4 Dry: 4
(ISO 105 - X12:2002)

Maintenance
Washable to 60°C. Vacuum
regularly. Wipe clean with a
damp cloth or shampoo using
proprietary upholstery
shampoo.

Availability
Generally ex-stock

Colour Matching
Batch to batch variations in
shade may occur within
commercial tolerances.

*Tested in accordance with BS 2543:1995/2004.
Further information available on request.

Please note that ultimate seam performance is
dependent on seam construction, and needle
and thread type. We recommend that appropriate
sewing advice be taken.

Note: We reserve the right to alter technical
specifications without notice.

D

Zusammensetzung
100% Recycelte Polyester
Nicht schwermetallhaltige
Farbstoffe

Gewicht
320g/m² ±5%
(450g/lf.d.M. ±5%)

Breite
140cm ±2% ohne Webkante

***Scheuerfestigkeit**
100,000 Martindale
Scheuertouren und 5 Jahre
Garantie gegen Durchscheuern
(Details auf Anfrage)

Feuersicherung
EN 1021 - 1:2006 (Zigarettestest)
EN 1021 - 2:2006 (Streichholztest)
BS 7176 : 2007 Low Hazard
BS 5852 : 2006 Section 4
Ignition Source 5
BS 7176 : 2007 Medium Hazard

Externe Zertifizierung
schwebend:
CSE RF 1/75/ACSE RF 3/77 - Class 1
NF - P - 92 - 507 M1
DIN 4102 B1

Bemerkung:
Schwerentflammbarkeit hängt
von verwendetem Schaum ab.

***Lichtechtheit**
6 (ISO 105 - B02:1999)

***Reibechtheit**
Nass: 4 Trocken: 4
(ISO 105 - X12:2002)

Reinigung
Waschbar bis 60°C.
Regelmässig staubsaugen.
Dazu mit einem feuchten Tuch
abwischen, oder mit einem
speziellen Polsterschaum
behandeln.

Lieferzeit
Im allgemeinen ab Lager

Farbabweichungen
Handelsübliche
Farbabweichungen
vorbehalten.

*Wurde nach BS 2543:1995/2004 getestet.
Weitere Informationen erhalten Sie auf
Nachfrage.

Eine optimale Nahtausreissfestigkeit hängt
von der Nähmaschine, der verwendeten Nadel
und des Fadens ab. Wir empfehlen daher
Nähversuche durchzuführen.

Anmerkung: Wir behalten uns die Änderungen
technischer Spezifikationen vor.

F

Composition
100% Polyester Recyclé
Teintures non métalliques

Poids
320g/m² ±5%
(450g/m.l. ±5%)

Largeur
140cm ±2% utilisable

***Résistance à l'abrasion**
100,000 Martindale tours avec
une garantie de durabilité de 5
ans (renseignements complé-
mentaires disponibles)

Flammabilité
EN 1021 - 1:2006 (cigarette)
EN 1021 - 2:2006 (allumette)
BS 7176 : 2007 Low Hazard
BS 5852 : 2006 Section 4
Ignition Source 5
BS 7176 : 2007 Medium Hazard

En instance de certification
externe:
CSE RF 1/75/ACSE RF 3/77 - Class 1
NF - P - 92 - 507 M1
DIN 4102 B1

Notez: Réaction au feu dépend
de la mousse utilisée.

***Solidité à la lumière**
6 (ISO 105 - B02:1999)

***Solidité au frottement**
Mouillé: 4 Sec: 4
(ISO 105 - X12:2002)

Nettoyage
Lavable jusqu'à 60°C. Aspirer
régulièrement. Essuyer avec
une étoffe humide ou nettoyer
à l'aide d'un produit approprié
pour tissus d'ameublement.

Disponibilité
Normalement en stock

Standardisation des coloris
Variations de coloris d'un bain
à un autre peuvent se
manifester.

*Testé selon la norme BS 2543:1995/2004. De
plus amples informations sont disponibles sur
demande.

Veuillez noter que le gissage de la couture sous
tension dépend de la structure de la couture, de
l'aiguille et du fil. Nous recommandons de prendre
conseil au près d'un professionnel.

Veuillez noter que nous réservons le droit de modifier
les spécifications techniques sans préavis.

DK

Materiale
100% Genanvendt Polyester
Ikke metalliske farvestoffer

Vægt
320g/m² ±5%
(450g/lin.m. ±5%)

Bredde
140cm ±2% anvendeligt

***Slidstyrke**
100,000 Martindale
slidebevægelser med 5 års
garanti (udforlig beskrivelse af
garantien kan rekvireres)

Flammesikring
EN 1021 - 1:2006 (cigarettest)
EN 1021 - 2:2006 (tændstiktest)
BS 7176 : 2007 Low Hazard
BS 5852 : 2006 Section 4
Ignition Source 5
BS 7176 : 2007 Medium Hazard

Afventer eksternt certifikat:
CSE RF 1/75/ACSE RF 3/77 - Class 1
NF - P - 92 - 507 M1
DIN 4102 B1

Bemærk: Flammesikkerheden
er afhængig af anvendt
skumtype

***Lysægtighed**
6 (ISO 105 - B02:1999)

***Gnidægtighed**
Våd: 4 Tør: 4
(ISO 105 - X12:2002)

Rengøring
Vaskbar ved 60°C. Støvsuges
regelmæssigt. Alternativt
rengøring med en hårdt
opvredet klud eller
skumrensning ved brug af en
anerkendt møbelschampoo.

Leveringstid
Normalt ab lager

Farvedifferencer
Farvedifferencer indenfor
kommercielle tolerancegrænser
kan forekomme fra serie til
serie.

*Testet i henhold til BS2543-1995/2004.
Yderligere information kan fås på fore-
spørgsel.

Vær opmærksom på, at optimal sømledning
er afhængig af søm-, nål- og trådtype. Vi anbef-
aler, at du følger relevante sy-instruktioner.

Bemærk: Vi forbeholder os retten til at
ændre tekniske specifikationer uden varsel.

ES

Composición
100% Recycled Polyester
Tintes no metálicos

Peso
320g/m² ±5%
(450g/lin.m. ±5%)

Ancho
140cm ±2% utilizable

***Resistencia a la abrasión**
100,000 Martindale ciclos con
garantía de uso 5 años (más
información disponible bajo
consulta)

Inflamabilidad
EN 1021 - 1:2006 (cigarrillo)
EN 1021 - 2:2006 (cerilla)
BS 7176 : 2007 Low Hazard
BS 5852 : 2006 Section 4
Ignition Source 5
BS 7176 : 2007 Medium Hazard

Pendiente certificación externa:
CSE RF 1/75/ACSE RF 3/77 - Class 1
NF - P - 92 - 507 M1
DIN 4102 B1

Condiciones ignífugas
dependientes del tipo de foam
utilizado

***Solidez a la luz**
6 (ISO 105 - B02:1999)

***Solidez al rozamiento**
Húmedo: 4 Seco: 4
(ISO 105 - X12:2002)

Mantenimiento
Lavable hasta 60°C. Limpiar con
aspiradora frecuentemente. Bien
lavar con un paño húmedo o
con un champú apropiado para
tapicería.

Disponibilidad
Directamente de stock

Igualdad de color
Cada lote puede tener pequeñas
variaciones en el tono dentro de
las tolerancias comercialmente
aceptadas.

*Pruebas realizadas según la norma
BS 2543:1995/2004. Más información
disponible bajo consulta.

El desfilamiento de costura depende de su
construcción así como el tipo de aguja e hilo
empleados. Se recomienda que pida consejos
apropiados para la costura.

Se reserva el derecho de modificar las especi-
ficaciones técnicas sin previo aviso.

camira

Camira Fabrics Ltd, Hopton Mills, Mirfield, West Yorkshire, UK, WF14 8HE

T +44 (0)1924 490591 Sales: UK (01924) 490491, Int. +44 1924 491666 F +44 (0)1924 495605 / 498930 e-mail: info@camirafabrics.com

UK Sales	T 01924 490491	F 01924 498930
International Sales	T +44 1924 491666	F +44 1924 495605
France/Benelux	T +32 56 227 266	F +32 56 228 647
Germany	T +49 7031 60 84 30	F +49 7031 60 84 33
Scandinavia	T +45 32 55 20 01	F +45 32 52 55 45
Hong Kong	T +852 2314 8728	F +852 2314 4250
Dubai	T +971 4 3967398	F +971 4 3967398

www.camirafabrics.com



ISO 9001:FM 26548

INVESTOR IN PEOPLE

ISO 14001:FM 35118